



Environmental impact assessment topics

The draft Environmental Impact Statement (EIS) includes a range of detailed technical studies in accordance with the EIS Guidelines set by the Environment Minister. You can read, review, and provide a submission on these studies, which are outlined in the draft EIS.



Land use

Existing land uses surrounding airports may be impacted by aircraft movements through the implementation of planning restrictions of future development. The assessment considered the potential for 3 key aspects to affect land uses:

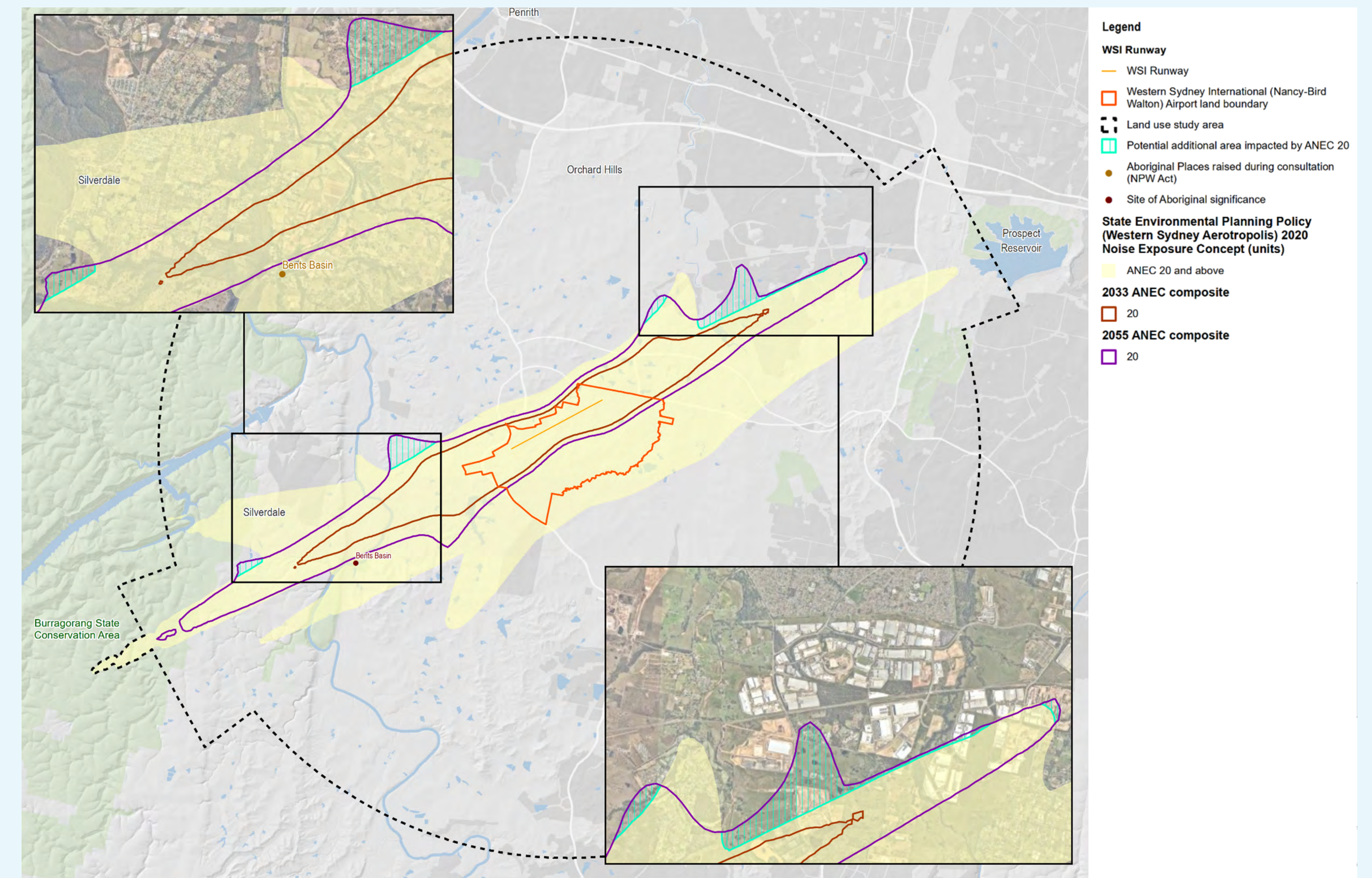
- aircraft noise
- restricted development due to protected airspace
- wildlife buffers.

An assessment of potential land use impacts associated with the project can be found at:

- Chapter 14 of the draft EIS
- Technical paper 6 (Land use and planning).

Key findings

- Land use planning controls are already in place, based on the long-term, dual-runway Australian Noise Exposure Concept (ANEC) prepared for WSI's 2016 EIS.
- An ANEC contour for single-runway operations in 2055 was prepared for this EIS, and was found to extend slightly beyond the current prescribed contour in a limited number of areas.
- Any updates to existing planning protections would be based on a revised dual-runway ANEC, due to be prepared during the detailed design phase.



Comparison of ANEC contours