



## Environmental impact assessment topics

The draft Environmental Impact Statement (EIS) includes a range of detailed technical studies in accordance with the EIS Guidelines set by the Environment Minister. You can read, review, and provide a submission on these studies, which are outlined in the draft EIS.



### Social

Social impacts generally refer to the consequences that individuals, households, groups, communities, or organisations experience when a project introduces change. Social impacts may be direct or indirect, positive or negative, and tangible or intangible.

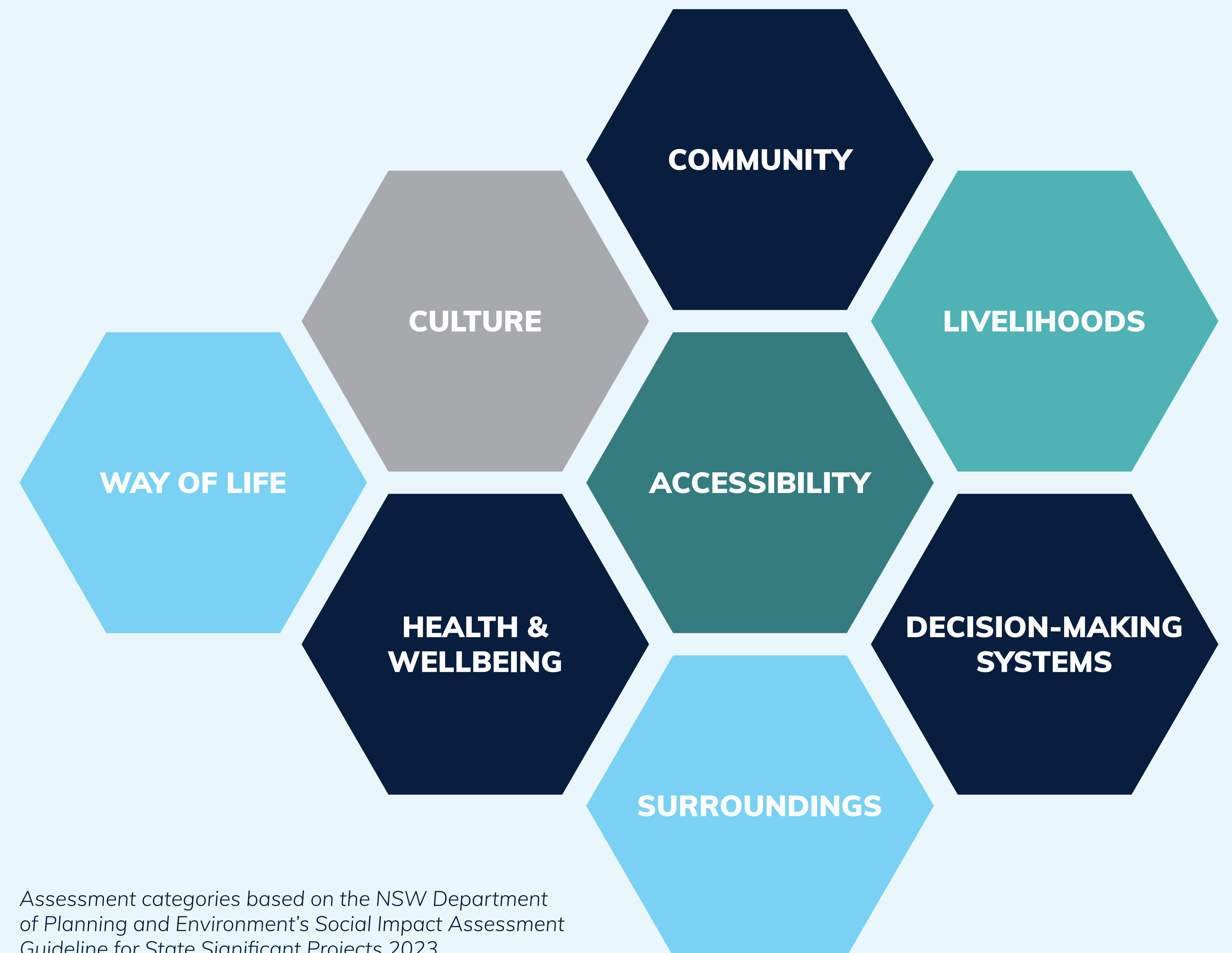
This assessment considered potential social impacts arising from the operation of WSI's flight paths, under the following categories – way of life, community, culture, accessibility, health and wellbeing, surroundings, livelihoods and decision-making systems.

**An assessment of potential social impacts associated with the project can be found at:**

- Chapter 18 of the draft EIS
- Technical paper 10 (Social).

#### Key findings

- Significant social impacts would occur primarily as a consequence of aircraft noise. These impacts include loss of amenity, impacts to community cohesion where residents choose to relocate, and potential increases to inequality for vulnerable groups.
- Ongoing consultation and engagement will be important to ensure communities are informed and able to participate in decision-making.
- Mitigation measures outlined in the draft EIS, and existing regulatory and planning controls, will generally reduce the significance of potential social impacts from a high significance rating to medium or low significance.



Assessment categories based on the NSW Department of Planning and Environment's Social Impact Assessment Guideline for State Significant Projects 2023