

Western Sydney International (Nancy-Bird Walton) Airport

Environmental Impact Statement Process



Western Sydney International (Nancy-Bird Walton) Airport (WSI) is a transformational infrastructure project that will deliver long-term employment opportunities, boost economic activity and provide extensive transport benefits for Western Sydney when it opens by late 2026.

The draft Environmental Impact Statement (EIS) for the preliminary flight paths for WSI is now on public exhibition. The draft EIS examines the impact of the proposed flight paths on the environment and the community. The public is invited to make submissions on the draft EIS by visiting wsiflightpaths.gov.au/make-a-submission.

Find out more



Visit the **Aircraft Overflight Noise Tool** to view the preliminary flight paths in more detail at wsiflightpaths.gov.au



View the draft EIS and project information on our Online Community Portal: wsiflightpaths.gov.au



Email us your questions at wsiflightpaths@infrastructure.gov.au



Call us on 1800 038 160



Attend our Community Information and Feedback Sessions to find out more and speak to a member of our team

You can register to attend via wsiflightpaths.gov.au/visit-us



Scan this QR code to access
our Online Community Portal.

What is an Environmental Impact Statement (EIS)?

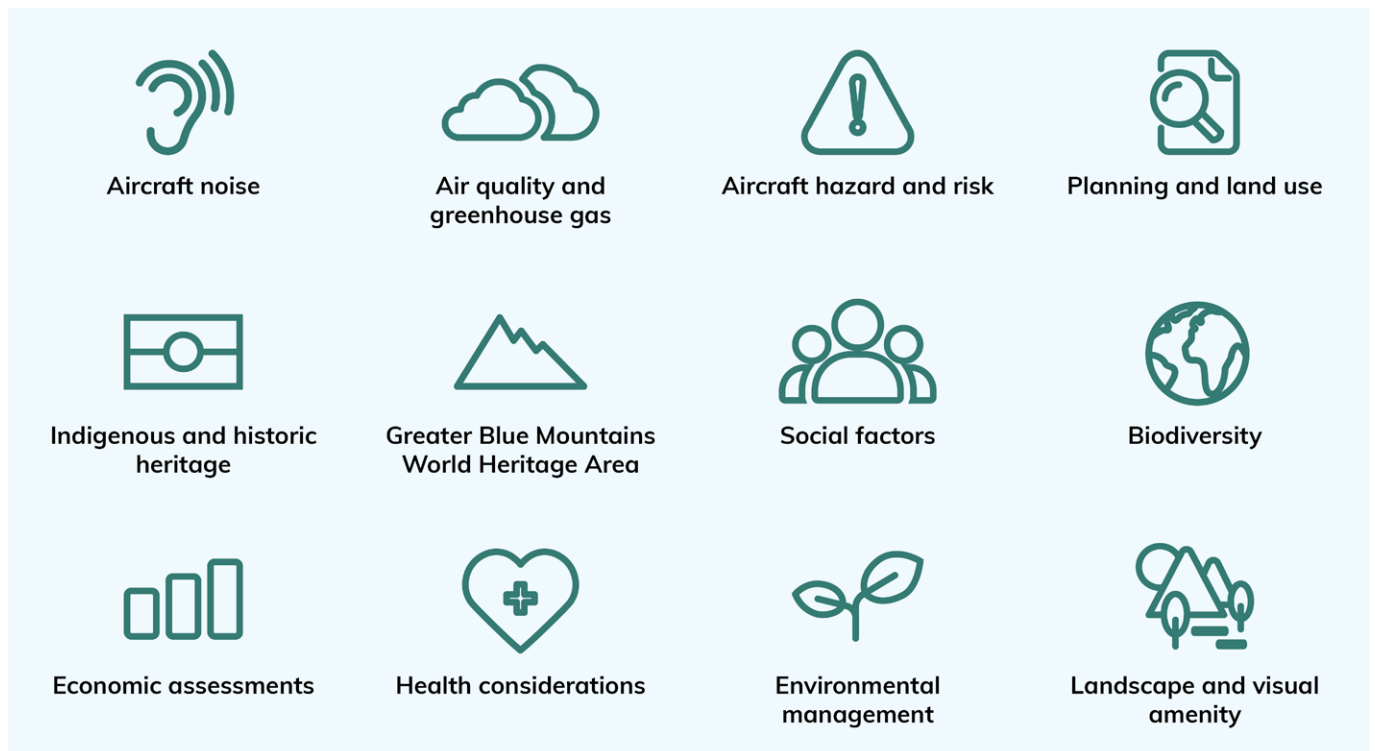
Under the Commonwealth *Environment Protection and Biodiversity Conservation Act 1999* (the EPBC Act), an EIS is a planning document that examines the environmental, social, heritage and economic impacts of a project and proposes measures to reduce the impacts to communities and the environment.

As part of the WSI project's approval processes, the Minister for the Environment and Water has advised that a full EIS is required for the WSI preliminary flight paths.

Matters relating to noise impacts, land uses, biodiversity, health and wellbeing, along with a range of social and economic factors are included in the draft EIS, as well as full details of the WSI preliminary flight paths.

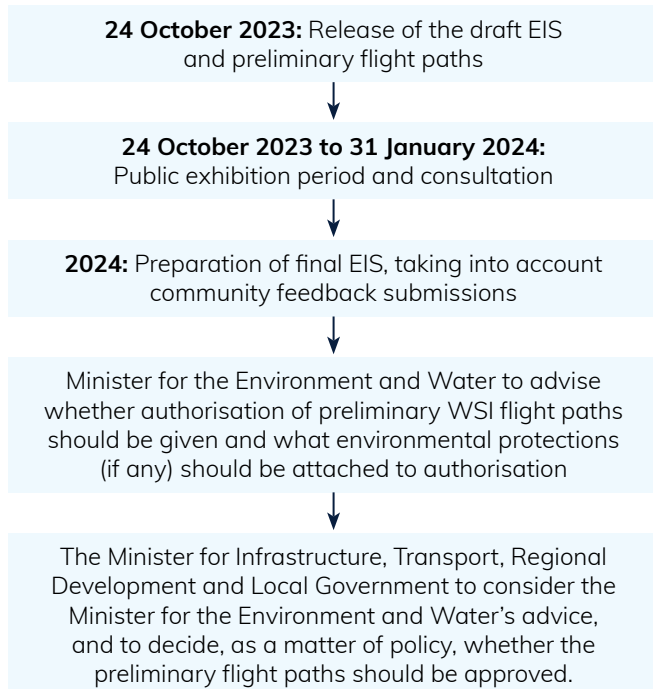
What does the WSI flight paths draft EIS include?

The draft EIS explores how the preliminary flight paths affect:



The EIS approval process

The EIS process is an important step in finalising WSI's flight paths. The Department of Infrastructure, Transport, Regional Development, Communications and the Arts has prepared the draft EIS in accordance with guidelines issued by the Minister for the Environment and Water. The EIS process is set out below.



What can I expect during the process?

People are encouraged to have their say on the draft EIS and the preliminary flight paths by making a submission.

During the draft EIS public exhibition period, information is available both online (through our Online Community Portal – wsiflightpaths.gov.au) and in-person to show where the preliminary flight paths will go and what the impacts will be. This includes an interactive online Aircraft Overflight Noise Tool.

This information can help you to understand any impacts to you and your community to help inform your submission.

The draft EIS also includes details of a draft Noise Insulation and Property Acquisition policy.

Where can I view the draft EIS?

You can view the draft EIS:

- on our Online Community Portal at: wsiflightpaths.gov.au
- in person at the NSW State Library at 1 Shakespeare Pl, Sydney NSW 2000
- in person at the Penrith City Library, 601 High Street, Penrith NSW 2750
- in person at local council buildings across Greater Sydney, with details available on the Online Community Portal at wsiflightpaths.gov.au or by calling 1800 038 160.

What your feedback can influence

One of the main objectives of the EIS process is to listen to the concerns of people and communities that may be impacted by the proposed flight paths.

Your submission on the draft EIS will be used to refine the development of:

- the preliminary flight paths for WSI, including modes of runway operation for WSI
- the social and economic impact assessment of the preliminary flight paths.

The scope of topics that have been assessed in the draft EIS for the preliminary flight paths has already been set by the Minister for the Environment and Water, under the terms of the *Environment Protection and Biodiversity Conservation Act 1999*.

The draft EIS for the preliminary flight paths will not cover the development of the WSI site itself, including the runway direction. This was considered as part of a separate EIS and approval process in 2016.

Other road and transport infrastructure projects in Western Sydney are subject to their own separate environmental assessment requirements and consultation processes.

Further information on the WSI project is available at westernsydneyairport.gov.au.

How can I have a say

There are a range of ways that you can make a formal submission during the public exhibition of the draft EIS, including:

- via the Online Community Portal: wsiflightpaths.gov.au
- by email to eis.submissions@infrastructure.gov.au
- by mail to Attn: WSI Flight Paths Team, GPO Box 594, CANBERRA ACT 2601.

We encourage you to view the information on the Online Community Portal at wsiflightpaths.gov.au to learn more about how flight paths are designed and engagement opportunities.

Making an effective submission:

- Focus on your areas of concern
- Explain what the impacts will be to you or your community
- Provide alternative suggestions and solutions, if you have any
- Keep it clear and concise
- Use drawings or diagrams if it helps.

Information in your language



Translating and Interpreting Service
(TIS National)

If you require the services of an interpreter, please contact the Translating and Interpreting Service on **131 450** and ask them to call the WSI Flight Paths team on **1800 038 160**.

Nếu quý vị cần thông dịch viên, vui lòng gọi cho Dịch vụ Thông Phiên dịch (Translating and Interpreting Service) qua số **131 450** và yêu cầu họ gọi cho đội ngũ phụ trách Đường bay Sân bay Quốc tế Western Sydney (Western Sydney International Airport Flight Paths) qua số **1800 038 160**.

如果您需要口译服务, 请致电 **131 450** 联系笔译与口译服务署 (Translating and Interpreting Service), 并请他们拨打 **1800 038 160** 联系西悉尼国际机场飞行路径团队 (Western Sydney International Airport Flight Paths)

यदि आपको दुभाषिए की सेवाओं की ज़रूरत है, तो कृपया **131 450** पर अनुवाद और दुभाषिया सेवा (Translating and Interpreting Service) से संपर्क करें और उनसे **1800 038 160** पर पश्चिमी सिडनी अंतरराष्ट्रीय हवाई अड्डा उड़ान पथ (Western Sydney International Airport Flight Paths) टीम को कॉल करने का अनुरोध करें।

إذا كنت بحاجة لخدمات الترجمة الشفوية، فيرجى الاتصال بخدمة الترجمة الكتابية والشفوية (Translating and Interpreting Service) على الرقم **١٣١ ٤٥٠** وأطلب منهم الاتصال بالفريق المعني بمسارات الطيران في مطار سيدني الغربية الدولي (Western Sydney International Airport Flight Paths) على الرقم **١٨٠٠ ٠٣٨ ١٦٠**

Kung kailangan mo ng mga serbisyo ng isang tagasaling pasalita (interpreter), mangyaring makipag-ugnayan sa Serbisyo ng Pagsasaling Pasulat at Pasalita (Translating and Interpreting Service) sa **131 450** at hilingin sa kanila na tawagan ang pangkat ng Mga Landas ng Paglipad sa Paliparang Internasyonal ng Western Sydney (Western Sydney International Airport Flight Paths) sa **1800 038 160**.

View this brochure in languages other than English

Please scan this QR code to view information in languages other than English.

Vui lòng quét mã QR này để xem thông tin bằng các ngôn ngữ khác ngoài tiếng Anh.

请扫描二维码查看中文信息。

अंग्रेज़ी के अलावा अन्य भाषाओं में जानकारी देखने के लिए कृपया यह QR कोड स्कैन करें।

يُرجى مسح رمز الاستجابة السريعة QR code هذا لعرض المعلومات بلغات أخرى غير الإنجليزية.

Paki-scan ang QR code na ito para makita ang impormasyon sa ibang wika maliban sa Ingles.

