



# Western Sydney International (Nancy-Bird Walton) Airport

## Draft EIS submissions overview



The new Western Sydney International (Nancy-Bird Walton) Airport is set to open for domestic and international travellers, and freight by late 2026.

The Australian Government is responsible for developing the flight paths for single runway operations at the airport.

### Public consultation

The draft Environmental Impact Statement (EIS) for the preliminary flight paths was released in October 2023 and examined in detail the noise, social and environmental impacts of the preliminary flight paths.

The draft EIS was open for public comment for 3 months until 31 January 2024, during which time any member of the public, community organisation, council or other group could make a submission.

### Your submission

During the public exhibition period, the Department of Infrastructure, Transport, Regional Development, Communications and the Arts received over 8,400 submissions.

The department acknowledges and thanks all those who took time to make a submission on the draft EIS, and those who engaged with our flight paths team during this process.

### Timeline



## Consideration of the submissions

The department’s flight paths team is now working through a step-by-step process to make sure that all submissions are considered.

- Firstly, submissions are logged and categorised against the relevant topics and sections of the draft EIS.
- Secondly, flight path and environmental technical experts review the detail of the submissions for suggested changes to the flight paths and operating modes, and identify possible flight path improvements.

Based on the review, the flight paths team is considering the need for additional assessment and further analysis of issues.

## Responding to submissions

A submissions report will be prepared as part of the final EIS, which will summarise the submissions received and will contain the department’s responses to the issues raised. The final EIS, including the final flight path design, is expected to be published in late 2024.

Community and landowner feedback is also being used to finalise the Noise Insulation and Property Acquisition (NIPA) program.

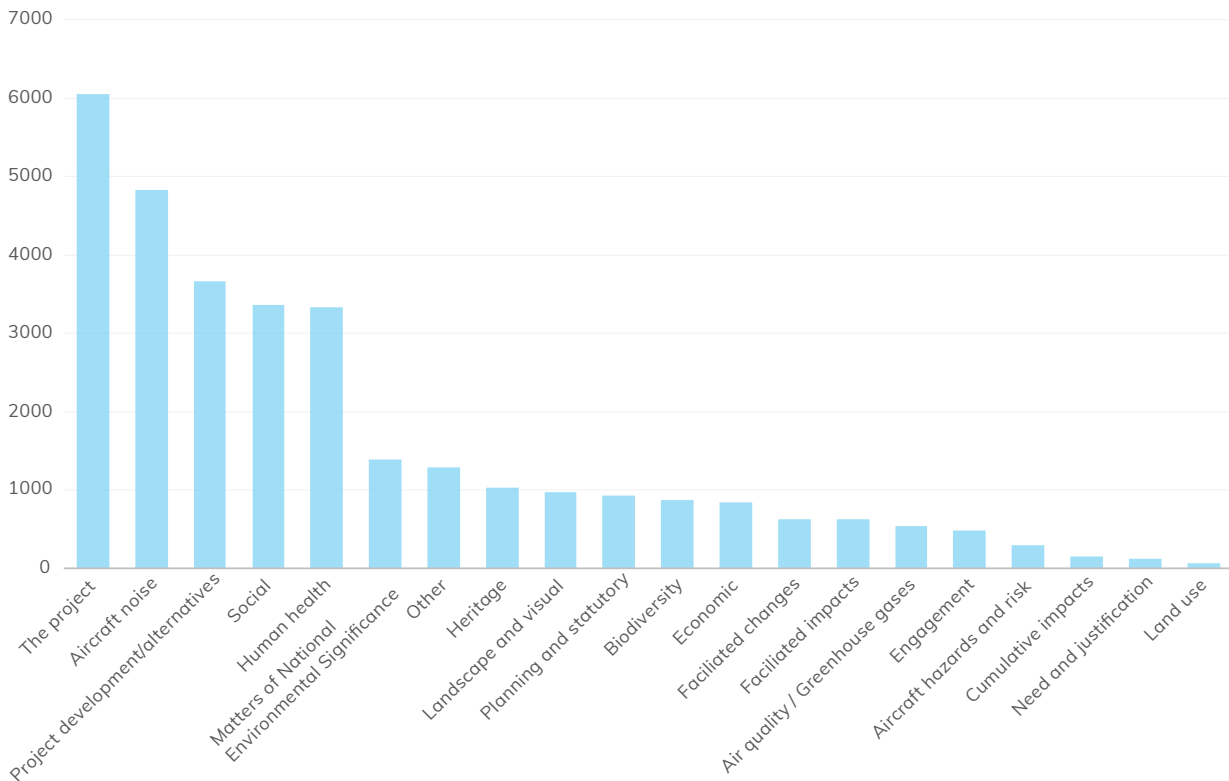
## Publication of submissions

The department is progressively publishing submissions online at [wsiflightpaths.gov.au/submissions](https://wsiflightpaths.gov.au/submissions). Meeting privacy requirements is important, and submissions will have identifying information such as names, addresses and personal information removed.

## Overview of submissions

### Key issues

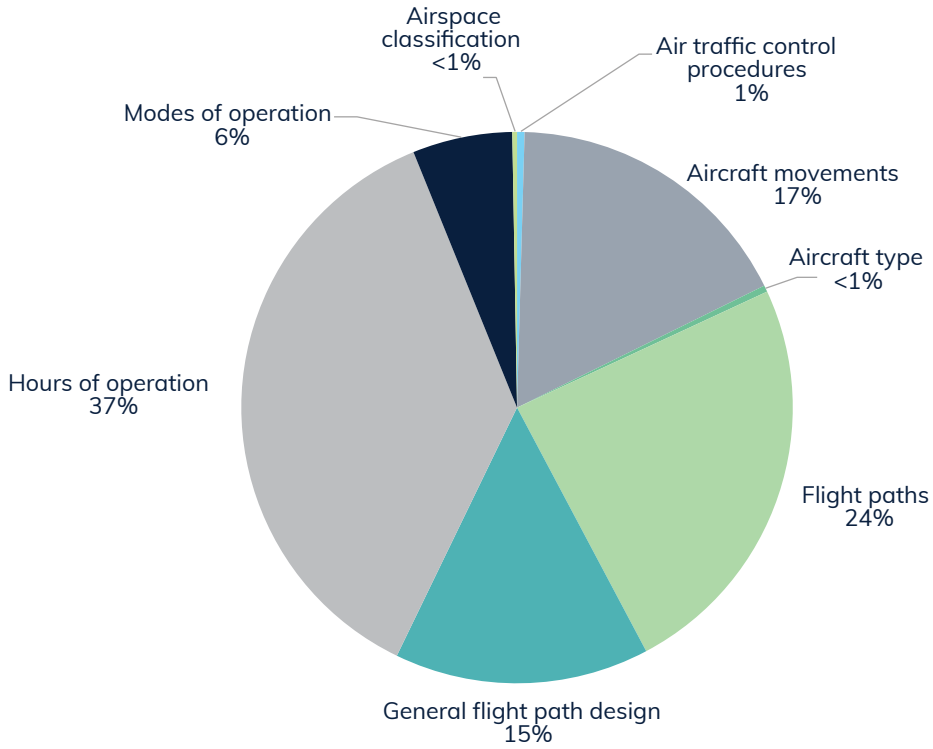
The initial breakdown of the key issues raised in each submission is shown below. Note that many submissions cover more than one key issue. The issues have been grouped to reflect the chapters in the draft EIS. The chart below is preliminary and will be refined for the submissions report.



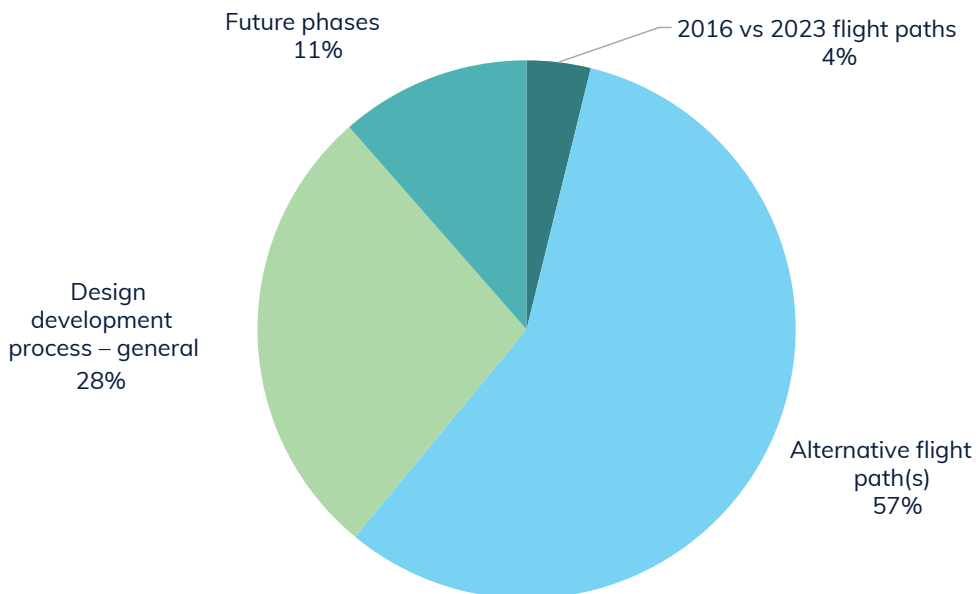
## Sub-issues

Each of the key issues have been broken down into sub-issues, and this is set out below. The percentages are preliminary and will be refined for the submissions report.

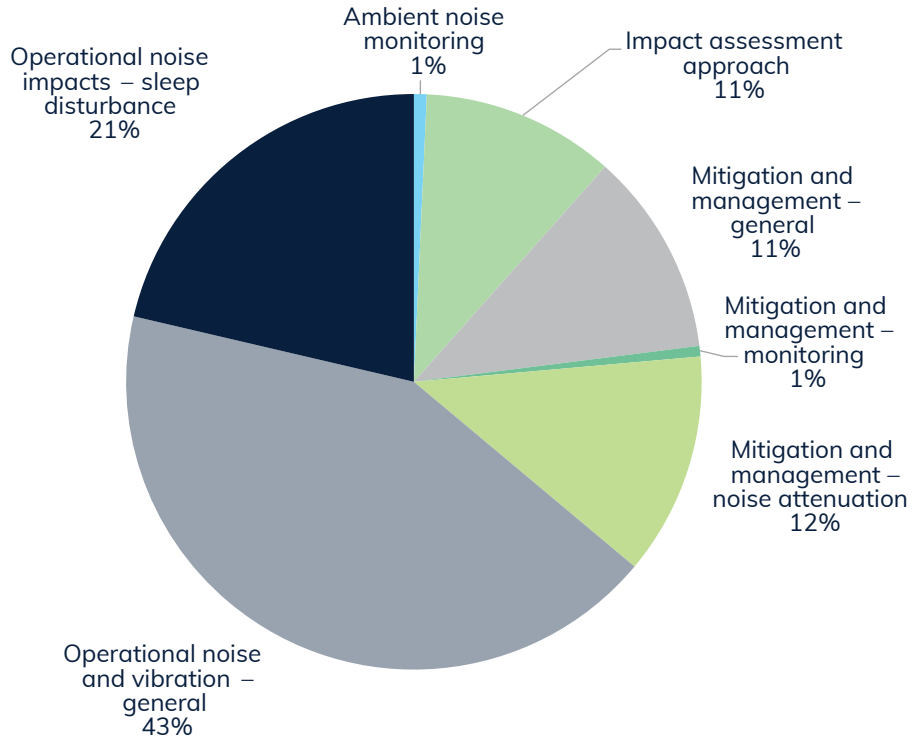
### The project



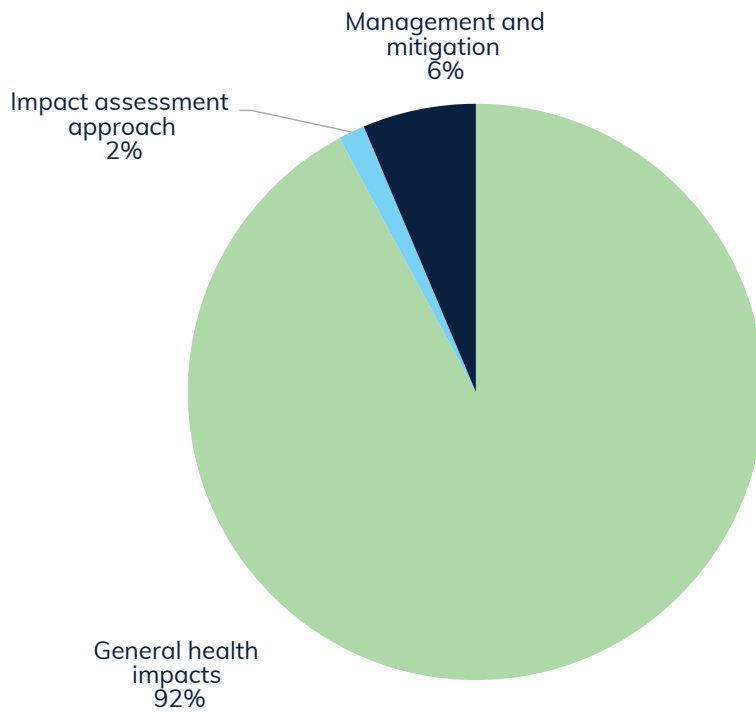
### Project development and alternatives



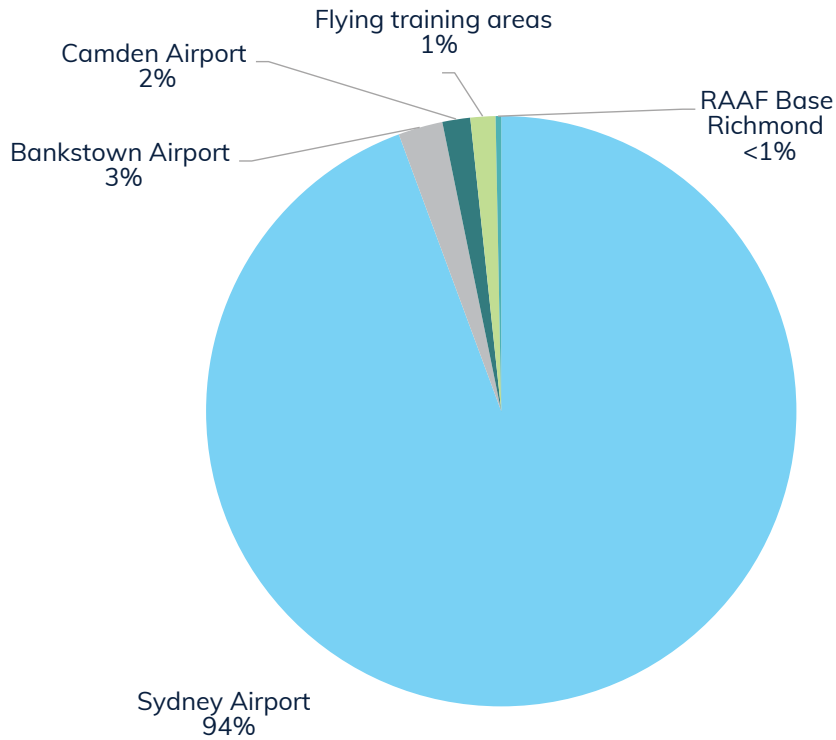
## Aircraft noise monitoring



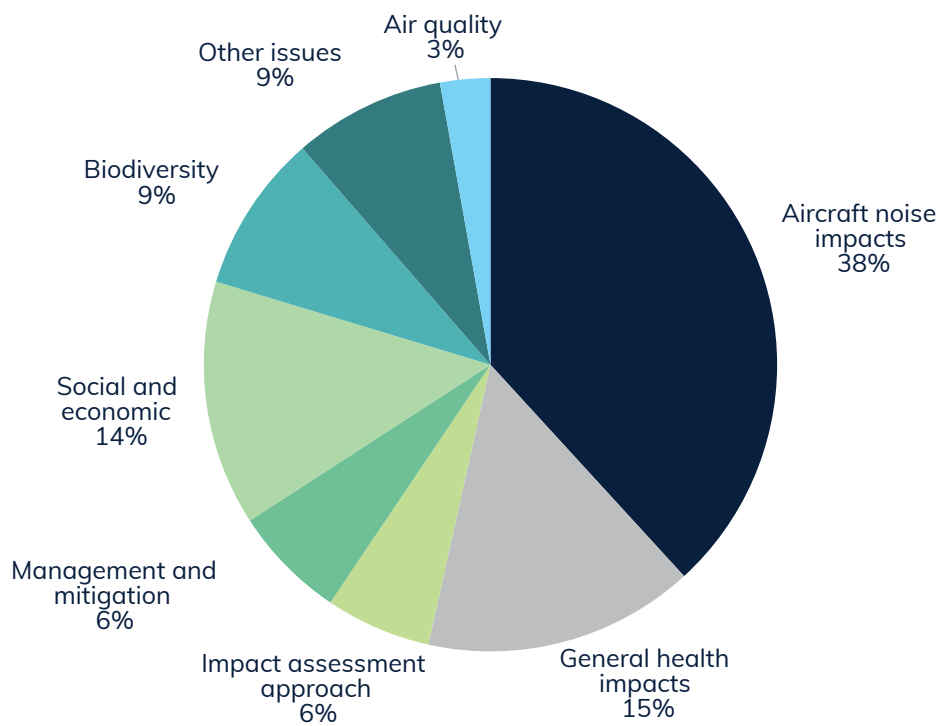
## Human health



## Facilitated changes

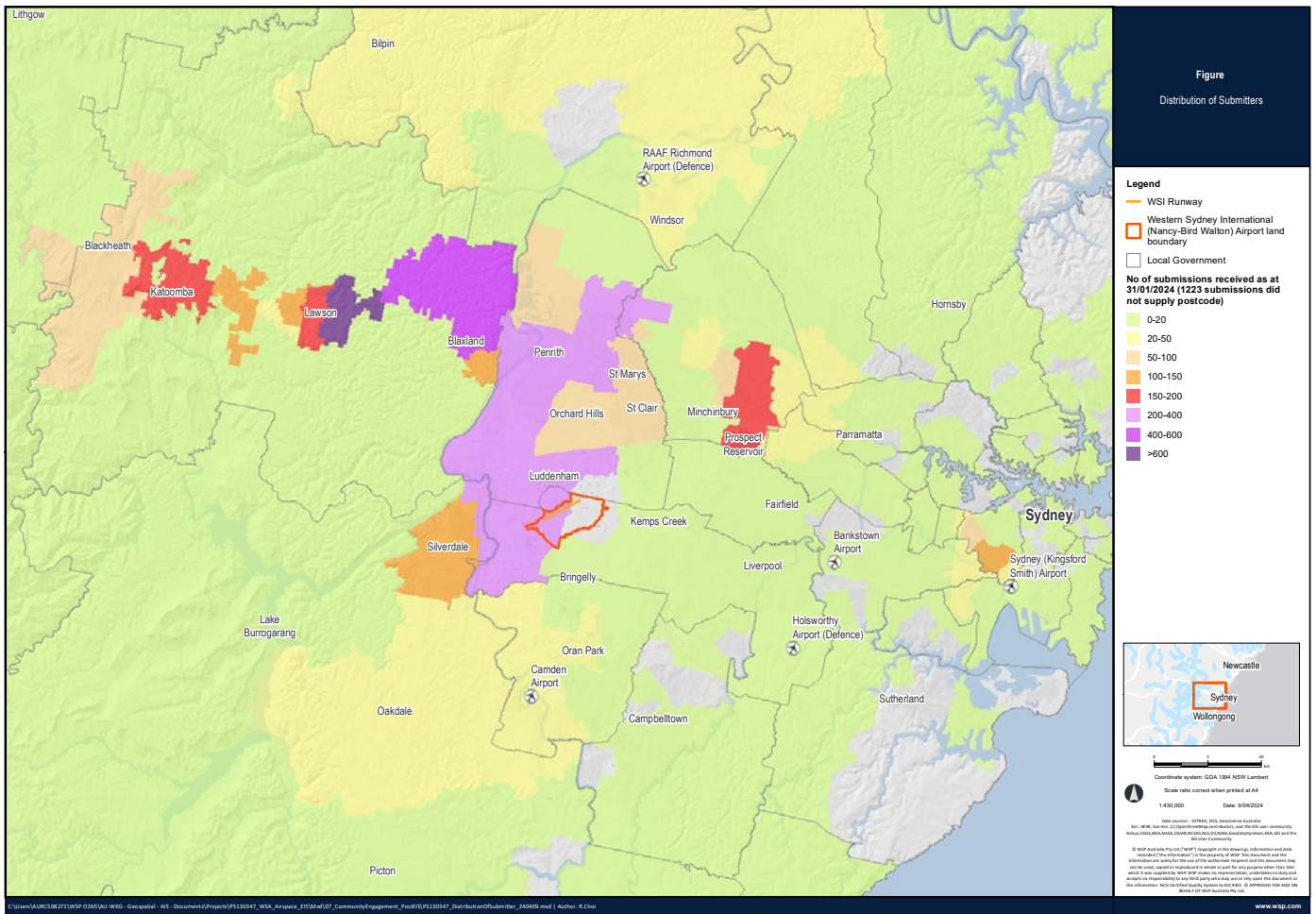


## Facilitated impacts



# Distribution of submitters

The figure below is a distribution map of submitter locations coloured by postcode.





## Next phase: detailed design and implementation

Following the finalisation of the EIS, Airservices Australia will begin detailed design and finalisation of the airspace and flight paths. This work is expected to commence in late 2024.

The department will then work with the Department of Climate Change, Energy, the Environment and Water on any conditions that may be attached to the final EIS to enable implementation of the final WSI flight paths and airspace design.

### Stay informed

-  Visit the **Aircraft Overflight Noise Tool** to view the preliminary flight paths in more detail at [wsiflightpaths.gov.au](https://wsiflightpaths.gov.au)
-  View the draft EIS and project information on our Online Community Portal: [wsiflightpaths.gov.au](https://wsiflightpaths.gov.au)

## Information in your language



### Translating and Interpreting Service (TIS National)

If you require the services of an interpreter, please contact the Translating and Interpreting Service on **131 450** and ask them to call the WSI Flight Paths team on **1800 038 160**.

Nếu quý vị cần thông dịch viên, vui lòng gọi cho Dịch vụ Thông Phiên dịch (Translating and Interpreting Service) qua số **131 450** và yêu cầu họ gọi cho đội ngũ phụ trách Đường bay Sân bay Quốc tế Western Sydney (Western Sydney International Airport Flight Paths) qua số **1800 038 160**.

如果您需要口译服务，请致电 **131 450** 联系笔译与口译服务署 (Translating and Interpreting Service)，并请他们拨打 **1800 038 160** 联系西悉尼国际机场飞行路径团队 (Western Sydney International Airport Flight Paths)

यदि आपको दुभाषिए की सेवाओं की ज़रूरत है, तो कृपया **131 450** पर अनुवाद और दुभाषिया सेवा (Translating and Interpreting Service) से संपर्क करें और उनसे **1800 038 160** पर पश्चिमी सिडनी अंतरराष्ट्रीय हवाई अड्डा उड़ान पथ (Western Sydney International Airport Flight Paths) टीम को कॉल करने का अनुरोध करें।

إذا كنت بحاجة لخدمات الترجمة الشفوية، فيرجى الاتصال بخدمة الترجمة الكتابية والشفوية (Translating and Interpreting Service) على الرقم **١٣١ ٤٥٠** وأطلب منهم الاتصال بالفريق المعني بمسارات الطيران في مطار سيدني الغربية الدولي (Western Sydney International Airport Flight Paths) على الرقم **١٨٠٠ ٠٣٨ ١٦٠**.

Kung kailangan mo ng mga serbisyo ng isang tagasaling pasalita (interpreter), mangyaring makipag-ugnayan sa Serbisyo ng Pagsasalang Pasulat at Pasalita (Translating and Interpreting Service) sa **131 450** at hilingin sa kanila na tawagan ang pangkat ng Mga Landas ng Paglipad sa Paliparang Internasyonal ng Western Sydney (Western Sydney International Airport Flight Paths) sa **1800 038 160**.

